



# NEWSLETTER #25

FEBRUARY 2023

## IN THIS ISSUE:

1. DISCUSSION GROUPS
2. DIARY OF A PROJECT
3. BLOGS
4. CASE STUDIES
5. COMMUNITY HOSPITALS IN THE NEWS
6. INTERNATIONAL CONNECTIONS
7. RESEARCH AND PUBLICATIONS
8. CALL FOR PAPERS
9. LEAGUES OF FRIENDS
10. JOIN THE CHA - HELPING US HELP YOU!

## Discussion Groups



The Community Hospitals Special Interest Group Discussion Evenings are organised by the Community Hospitals Association and our Community Hospitals Special Interest Group - part of the Q Community. All are very welcome and all sessions are free. They are also recorded and can be viewed on our website [here](#).

### "Joy in Work" Wednesday 1st March at 7pm

We are delighted to be joined by **Julia Wood** who will talk about the [Joy in Work](#) which will be followed by a discussion. We know that members have asked to talk about staffing issues such as morale, recruitment and retention - and these are all highly topical at the moment. Do join us, share your experiences, talk about good practice and contribute to the debate. All are welcome.



JULIA WOOD

[REGISTER FOR "JOY IN WORK" HERE](#)

### "Safer Staffing" Wednesday 5th April at 7pm



PROFESSOR  
ALISON LEARY

HELEN HUGHES

**Save the date!** We will have an important and significant session on safer staffing in April. Our members have asked for this topic to be discussed as it is so pertinent currently.

We are pleased to be joined by **Professor Alison Leary** - Chair of Healthcare & Workforce Modelling LSBU and **Helen Hughes** - Chief Executive of Patient Safety Learning. Not to be missed!

## Join our Special Interest Group for Community Hospitals in the Q Community

Be part of our growing network in the Q Community.

Details on our website—[Join the Community Hospitals Special Interest Group on Q here](#)

If you would like more detailed instructions on HOW to join please follow [this link](#) to a step by step guide.



Led by



Supported by



### Diary of a Project

This [publication](#) is an insightful account of the management of the project to study the role of community hospitals during COVID-19, written by the Project Lead, **Evelyn Prodger**.

This will be of interest to those concerned with community hospitals, as well as those embarking on a project and want to consider project management stages.

Evelyn recounts achievements and challenges in the diary, as well as sharing lessons learnt.

The project team want to thank Evelyn for her leadership, and QExchange from the Q Community, Health Foundation, for supporting this project.



EVELYN PRODGER



We are delighted to say that we have 3 new blogs on our [Blog page](#).

They make fantastic reading, so please do take a look.

#### Inspiring and motivating leadership for the future workforce

**Ifunanya Obi** (aka Nanya), Practice Development Nurse, Sussex Community Foundation Trust

Nanya says *"I wanted to encourage nurses to imbibe and demonstrate practices that show and positively influence standards of practice, work ethics and morale of others. In other words, I wanted to give them the foundational tools required to become strong and effective leaders."*



#### Can Scotland deliver NHS reform in 2023?

**Dr Alastair Noble**, Previously Chair of the Scottish Association of Community Hospitals and currently CHA Lead for Scotland

Alastair argues: *"We must prioritise the individual patient and their own locality team. We must replace beds in Specialist Consultant Hospitals with beds in Generalist Community Hospitals."*



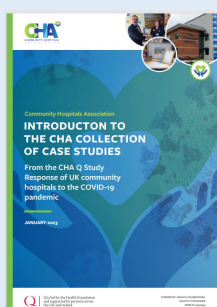
#### The Vital Contribution of our Community Hospitals

**Dr Kirsty Protherough**, Director of CHA and GP

Kirsty makes the case: *"Now, more than ever before, Community Hospitals should be included in key decisions regarding the future of healthcare in the UK."*



### Case Studies



#### CHA Q Study - 31 Case Studies

You can now access our compilation of all of the case studies in one pdf, for ease of reference. You can also download each case study individually.

All resources on case studies are on our website [here](#)



## Community Hospitals in the News

Do take a look at our [news page](#), which features community hospitals across the UK.



News includes the Chair of the RCGP calling for the utilisation of community and cottage hospitals to help manage demand in the NHS.

Also good news for Didcot Community Hospital attracting more funding for their arts projects and a study to encourage staff to reflect on what makes Didcot Community Hospital brilliant. We will follow these results with interest!



Other hospitals in the news include Ross on Wye, Blandford, Peterhead, Leominster and Falmouth. Do send in any news stories of your community hospital that you would like us to feature.

## International Connections

### Italy

We continue to share learning with our colleagues from Italy. The CHA is making a presentation to a [conference of health service planners](#) on 13th February.



### Uganda

**Jostas Mwebembezi** is the Executive Director of the [Rwenzori Center for Research and Advocacy \(RCRA\)](#) in Uganda and has joined the CHA.



Jostas has asked us to publicise their appeal for Ultrasound equipment for women and children in Kasese. Jostas would be pleased to talk about secondhand equipment.

Please contact the CHA if you think you can help. We wish the project well. It is clearly a much-needed facility. Our International page on our website gives more details [here](#)



## Research and Publications Discharge Medicines Service



**Temitope Odetunde** is Head of Medicines Management, First Community Health and Care.

She and her team carried out a study on the Discharge Medicines Service (DMS) with the aim to investigate the medicines related risk for patients discharged from Caterham Dene Hospital (CDH), a community hospital service.



According to the authors, the findings of the study demonstrate that it is important for private providers of community hospital services, such as First Community, to be included to deliver the DMS referral service.

More details on the CHA website here:

<http://www.communityhospitals.org.uk/quality-improvement/research-current.html>



**Call for Papers:** Planning, commissioning, delivering and evaluating people centred integrated care in rural, remote, or island communities.



**Professor Anne Hendry** with her editorial team warmly invite you to submit a research paper, viewpoint, case study or review on a wide range of topics that include: Role of community hospitals in remote, rural or island communities.  
Closing date: 31 May 2023

More details on our website [here](#)



## Leagues of Friends

Please share your stories, your achievements and how you are making a difference in your local hospital. The CHA is pleased to support Leagues of Friends in the valuable work they do.



**Dr David Pope**, Chair of the League of Friends for Victoria Hospital Wimborne, wrote this for our 50 years celebration of the CHA:

*"Our Victoria Hospital Wimborne continues to thrive and is forever grateful to CHA for the part it played in its continued success. On a personal note: since 1970 Wimborne hospital has been transformed from a rundown half utilised hospital into an expanding vital unit with a rehabilitation and terminal care facility, busy day surgery ward and modern operating theatre, diagnostic X-ray and ultra-sound, endoscopy service, physiotherapy, occupational therapy departments, and outpatients clinics with 75 varied clinics per month."* Read more on our website [here](#)

## Join the CHA - Helping us help you!

The Committee are all volunteers who are passionate supporters of the work done in and by Community Hospitals. Our running costs are extremely low but as the national voice of Community Hospitals we rely on organisational membership to fund the work we do promoting and supporting them. We are very aware of the impact the cost of living is having on colleagues in Community Hospitals so personal membership remains free.

Organisational membership is £100 for League of Friends. In addition to joining our network, receiving information such as Newsletters and having access to Committee members, organisational membership allows the Community Hospital to enter the CHA Innovation and Best Practice Awards.

We would be pleased to talk to Leagues of Friends about the benefits of being part of our network. We would also welcome blogs from Leagues of Friends, giving an insight to the valuable contribution they make.

Join the CHA Join [here](#)

Details of our Awards here: [Innovation and Best Practice Awards](#)



## CONTACT & SOCIAL MEDIA



[www.communityhospitals.org.uk](http://www.communityhospitals.org.uk)



[@CommHospUK](https://twitter.com/CommHospUK)



[COMMUNITY HOSPITALS ASSOCIATION](https://www.communityhospitals.org.uk)



[Community Hospitals Association | Facebook](https://www.facebook.com/CommunityHospitalsAssociation)



[infocommunityhospitals@gmail.com](mailto:infocommunityhospitals@gmail.com)